



TECNOAMBIENTE

A TRADEBE COMPANY

Enabling sustainable progress

**PROVIDING INTEGRATED ENVIRONMENTAL,
SURVEY AND INSPECTION SOLUTIONS**

Globally. Offshore & Nearshore. On shore. In our own Labs.

RENEWABLES



TECNOAMBIENTE

A TRADEBE COMPANY

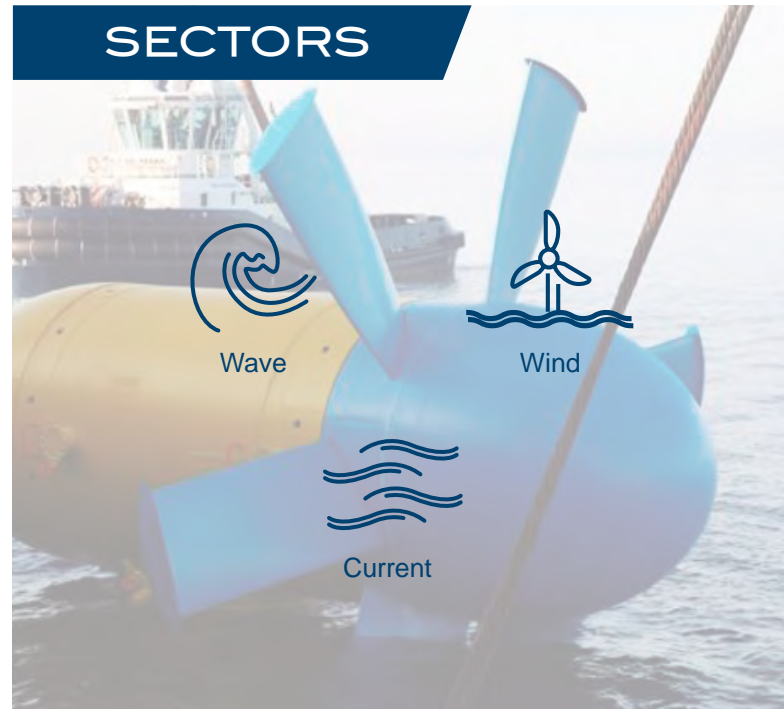
At Tecnoambiente we are specialized in providing solutions in the marine environment. Over 2,000 projects performed in nearshore and offshore areas endorse our experience since 1980.

Our scope is global, as we provide services all around the world, helping our clients to find the best solutions to their needs and to develop their activities in a sustainable manner.


We have a team of 100+ professionals comprising consultants and surveyors highly qualified, capable of providing integrated solutions to any challenge. We perform marine survey field works as well as all the required environmental studies.

Tecnoambiente belongs to the Tradebe group, who is a leading international company in the environmental services sector, with presence in Europe, the US and the Middle East.

SECTORS



GLOBAL SCOPE

Locations 
Projects 
Key Offshore Projects 

NKT – The Channel Islands (UK)

UXO survey and target identification by WROV of the GJ1 interconnector between Guernsey and Jersey.

GEOTEAM – Strait of Gibraltar

Cable route survey for 6 landing points between Spain and North Africa.

REE – Canary Islands

Marine survey of the new interconnector and inspection of the installed cable between Lanzarote and Fuerteventura.

Marine survey of the deep corridor between Tenerife and Gomera in the development of the new interconnector.

NATURGY – Panama

Marine survey and EBS of a submarine power cable between mainland and the islands in Bocas del Toro.

MORAY WEST – Scotland (UK)

Moray West Wind Array and Export Cable. Geophysical, UXO and Geotechnical Surveys, including HDD site investigation.

ACCIONA – Basque Country (Spain)

Site and export cable survey for the HIPRWIND project.

NEXANS – Balearic Islands (Spain)

DTS, route survey including UXO and BAS of the submarine interconnector between Mallorca and Menorca.

ACCIONA – Cádiz (Spain)

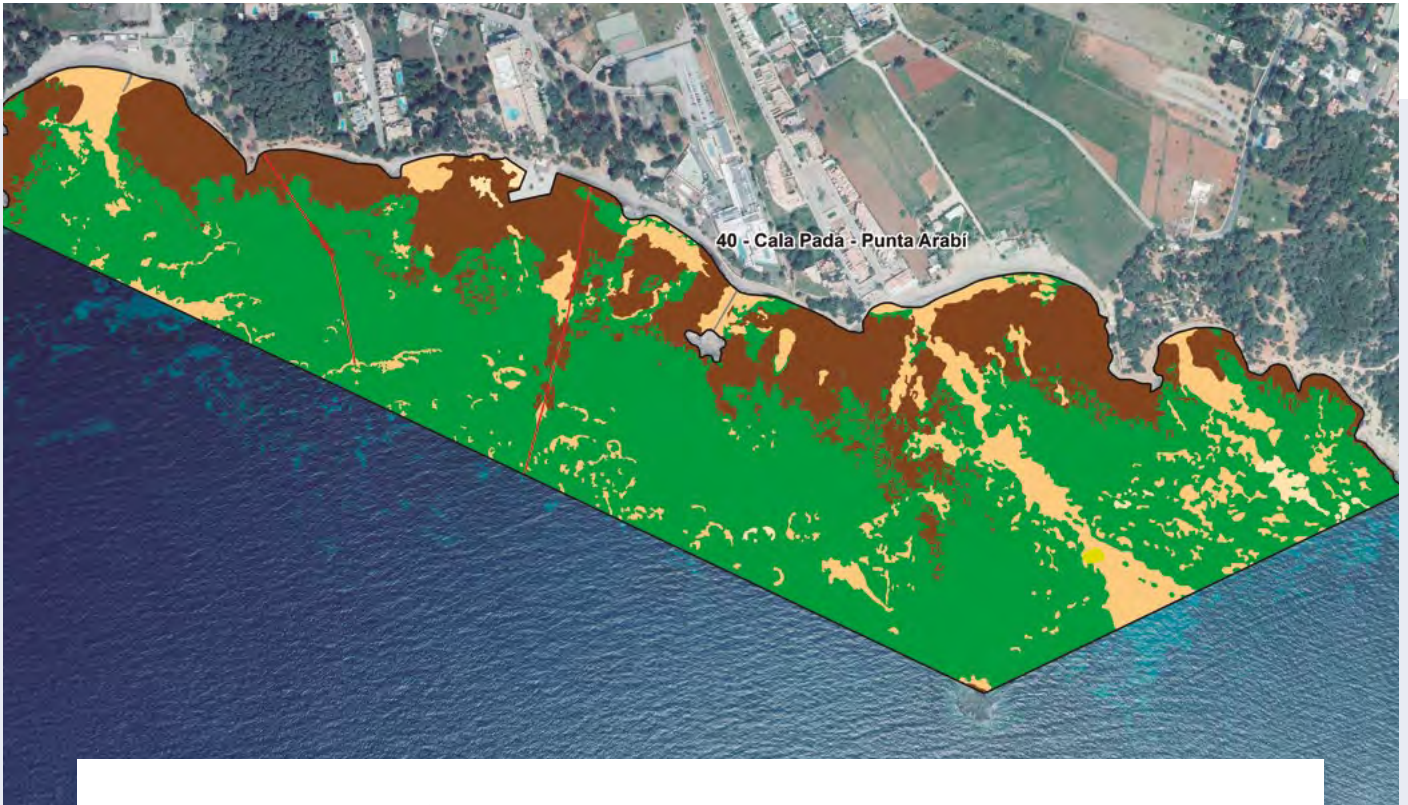
Marine survey for FEDER Interconecta SEAMAR project.

GITGE – Equatorial Guinea

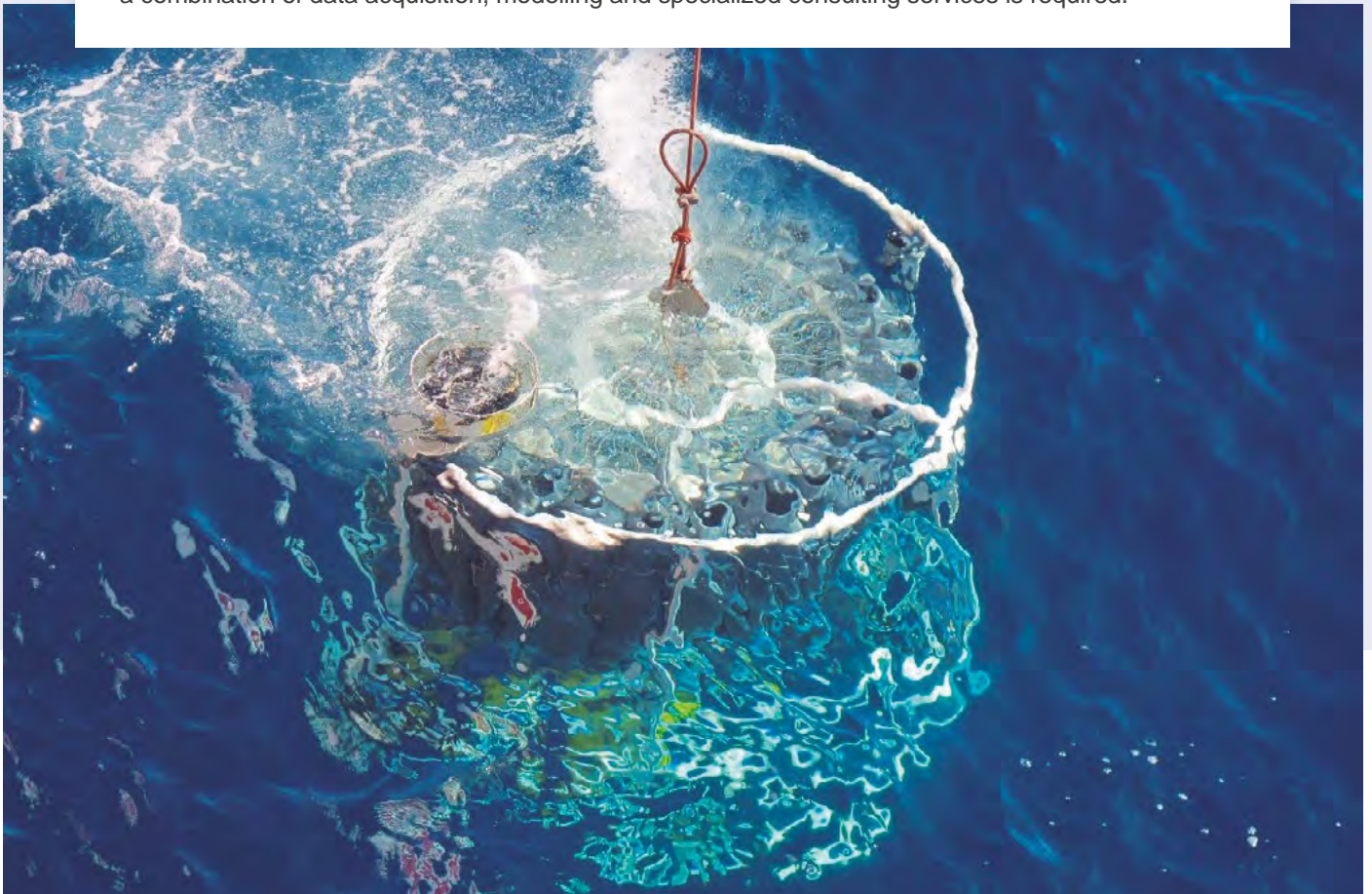
Route survey of the submarine telecom cable and power cable link between mainland and the islands.
CEIBA-1 landfalls and ACE cable BU beacons system setup in Malabo and Bata coasts.



DESKTOP STUDY AND ENVIRONMENTAL IMPACT ASSESSMENT

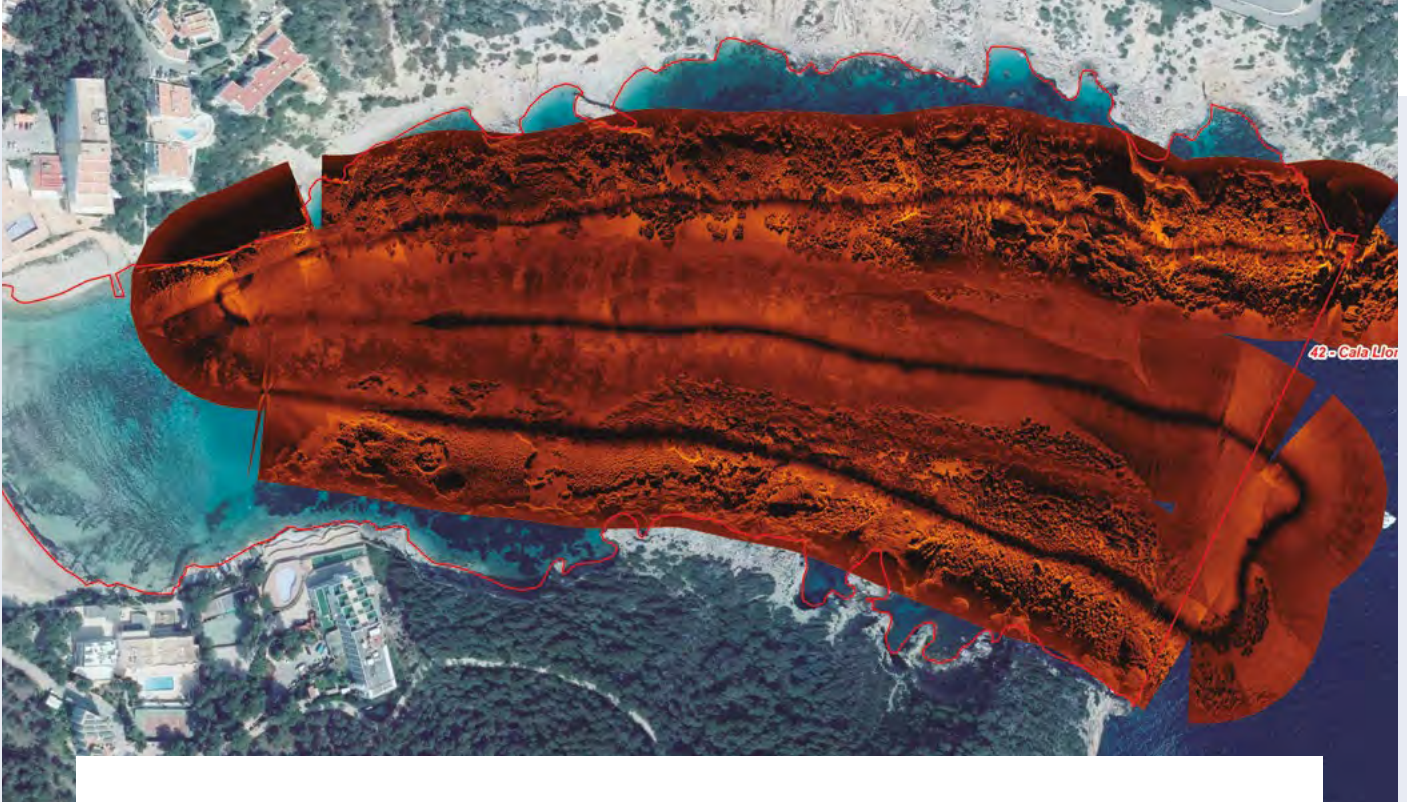


By gathering existing data from selected sources, including a detailed oceanographic campaign, Tecnoambiente provides an overview of risks and limitations related to the project area in which the turbines, the substations, and the route of the export cable to the onshore connection will be installed. Tecnoambiente works with developers and operators in the EIA with the administration, with the provision of accurate and complete environmental studies, providing a comprehensive solution where a combination of data acquisition, modelling and specialized consulting services is required.



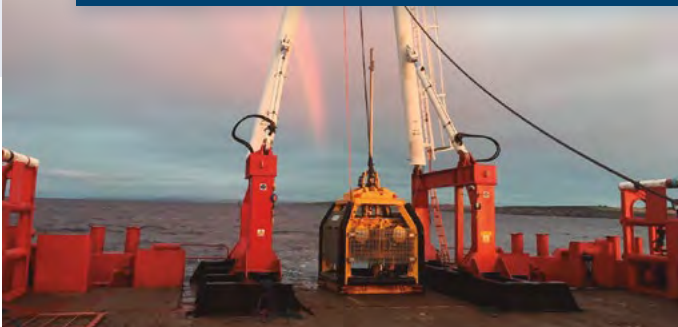


DESIGN – ENGINEERING SURVEYS



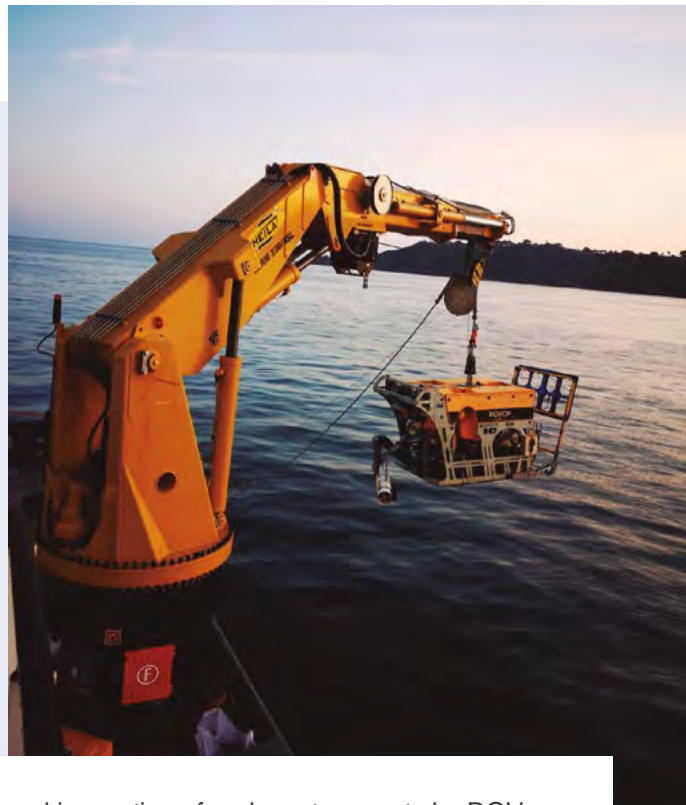
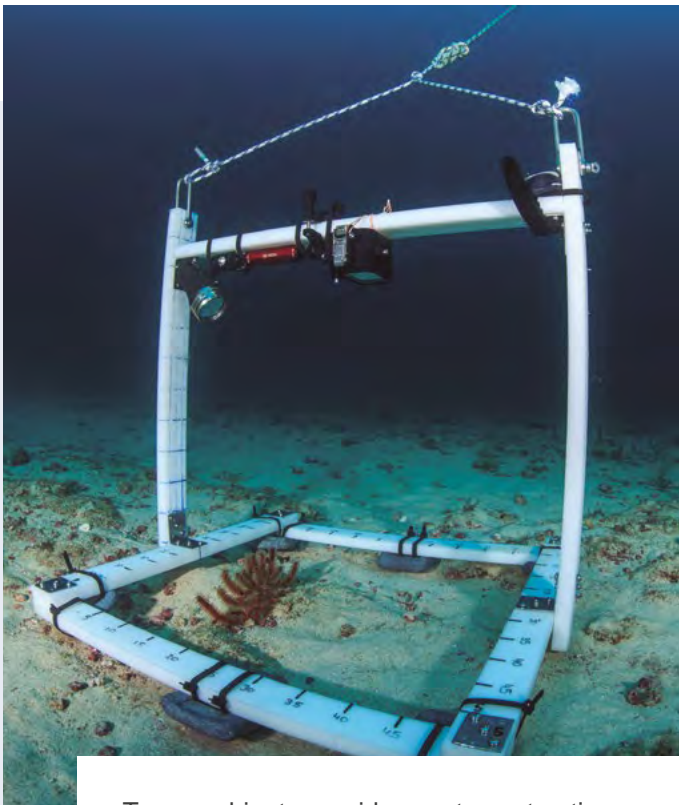
Tecnoambiente undertakes surveys and precise investigations, producing detailed reports for the planning, design and construction of offshore facilities, export cable route, interarrays etc., including:

- ~ Geotechnical Site Characterization for the design of structures and routes by sampling and laboratory tests, CPT tests, thermal resistivity tests and surveys in landing areas (HDDs investigations) etc.
- ~ Environmental assessments, including benthic biological mapping and geochemical analysis.
- ~ Geomorphology and seabed items detection providing high-resolution bathymetries and data acquisition with the side-scan sonar.
- ~ Cross-sections and charts including geotechnical layers and buried elements with the interpretation of the sub-bottom profiler and magnetometer data.
- ~ UXO, including survey and target identification tasks with divers or ROV.
- ~ Oceanographic / meteorological monitoring, including data acquisition of currents, waves and wind.





CONSTRUCTION AND MAINTENANCE



Tecnambiente provides post-construction surveys and inspection of underwater assets by ROVs or divers including the following services:

- ~ Post-lay surveys of export cables, inter-arrays, etc.
- ~ Support during cable installation and protection.
- ~ Underwater positioning during construction.
- ~ Inspection of jackets, cables, anchors, etc.
- ~ Post-construction seabed mapping.
- ~ GIS and CAD support.



Spain

Catalonia (Headquarters)

Rda. Can Fatjó, 19 B, Parc Tecnològic del Vallès
08290 Cerdanyola del Vallès (Barcelona)
T. +34 93 594 20 36
F. +34 93 594 21 53
info@tecnoambiente.com

Catalonia (Laboratory)

C/ Indústria, 550 - 552
08918 Badalona (Barcelona)
T. +34 93 387 80 80
F. +34 93 387 80 39
tecnoambiente@tecnoambiente.com

Andalusia

C/ Newton, 15 E, Parque empresarial
11407 Jerez de la Frontera (Cádiz)
T. +34 956 30 24 86
F. +34 956 31 01 39
delegacion.andalucia@tecnoambiente.com

Aragon (Laboratory)

C/ Sisallo, 22-24, Nave D-9, Pol. Empresarium
50720 La Cartuja Zaragoza
T. +34 976 13 26 33
F. +34 976 13 26 48
delegacion.aragon@tecnoambiente.com

Canary Islands

C/ Domingo J. Navarro, 48 bajo
35002 Las Palmas de Gran Canaria
T. +34 93 594 20 36
F. +34 93 387 80 39
delegacion.canarias@tecnoambiente.com

Galicia

C/ Galileo Galilei, 34, planta 1ª, puerta A
15008 A Coruña
T. +34 981 27 47 20
F. +34 981 27 47 77
delegacion.galicia@tecnoambiente.com

Peru

Lima

Avda. Arequipa, 2450, Oficina 608
Lince, LIMA
T.+511 444 1238
sucursal.peru@tecnoambiente.com

Colombia

Bogotá

C/ 90, 12 - 28, Oficina 24
Chicó, Bogotá D.C.
T. +571 6386894
sucursal.colombia@tecnoambiente.com



tecnoambiente.com



company/tecnoambiente---tradebe



@Tecnoambiente_