



# TECNOAMBIENTE

A TRADEBE COMPANY

*Enabling sustainable progress*

**PROVIDING INTEGRATED ENVIRONMENTAL,  
SURVEY AND INSPECTION SOLUTIONS**

*Globally. Offshore & Nearshore. On shore. In our own Labs.*

**CABLES: TELECOM & ENERGY**



# TECNOAMBIENTE

A TRADEBE COMPANY



At Tecnoambiente we are specialized in providing solutions in the marine environment. Over 2,000 projects performed in nearshore and offshore areas endorse our experience since 1980.

Our scope is global, as we provide services all around the world, helping our clients to find the best solutions to their needs and to develop their activities in a sustainable manner.

We have a team of 100+ professionals comprising consultants and surveyors highly qualified, capable of providing integrated solutions to any challenge. We perform marine survey field works as well as all the required environmental studies.

Tecnoambiente belongs to the Tradebe group, who is a leading international company in the environmental services sector, with presence in Europe, the US and the Middle East.

## GLOBAL SCOPE

Locations   
Projects   
Key Offshore Projects 

### NKT – The Channel Islands (UK)

UXO survey and target identification by WROV of the GJ1 interconnector between Guernsey and Jersey.

### GEOTEAM - Strait of Gibraltar

Cable route survey for 6 landing points between Spain and North Africa.

### REE – Canary Islands

Marine survey of the new interconnector and inspection of the installed cable between Lanzarote and Fuerteventura.

Marine survey of the deep corridor between Tenerife and Gomera in the development of the new interconnector.

### NATURGY – Panama

Marine survey and EBS of a submarine power cable between mainland and the islands in Bocas del Toro.

### MORAY WEST – Scotland (UK)

Moray West Wind Array and Export Cable. Geophysical, UXO and Geotechnical Surveys, including HDD site investigation.

### ACCIONA – Basque Country (Spain)

Site and export cable survey for the HIPRWIND project.

### NEXANS – Balearic Islands (Spain)

DTS, route survey including UXO and BAS of the submarine interconnector between Mallorca and Menorca.

### ACCIONA – Cádiz (Spain)

Marine survey for FEDER Interconecta SEAMAR project.

### GITGE - Equatorial Guinea

Route survey of the submarine telecom cable and power cable link between mainland and the islands.  
CEIBA-1 landfalls and ACE cable BU beacons system setup in Malabo and Bata coasts.



## PLANNING, FEASIBILITY AND PERMITTING



Tecnoambiente has extensive experience in feasibility studies, identifying the key aspects, project restrictions and risks in order to select the best route from a technical and commercial perspective.

The high specialization of the multidisciplinary team and the comprehensive vision and experience in following-up administrative procedures, permits and authorizations are a guarantee of success.



## PROJECT DEVELOPMENT AND ENVIRONMENTAL IMPACT ASSESSMENT

Tecnoambiente works with developers and contractors in the EIA with the administration, with the provision of accurate and complete environmental studies, providing a comprehensive solution for landing sites and submarine cable routing where a combination of data acquisition, modelling and specialized consulting services is required. Tecnoambiente services include:

- ~ EIA including oceanographic surveys and acoustic monitoring, MMO, sampling, etc. or the required tasks according to the regulations, and follow-up with the competent authorities and stakeholders.
- ~ Desktop studies according to ICPC standards.
- ~ Preliminary selection of cable type and type of protection.
- ~ Lay and Post-lay EMP.
- ~ RPL preparation.





## PRE-LAY AND CABLE LAY SURVEYS



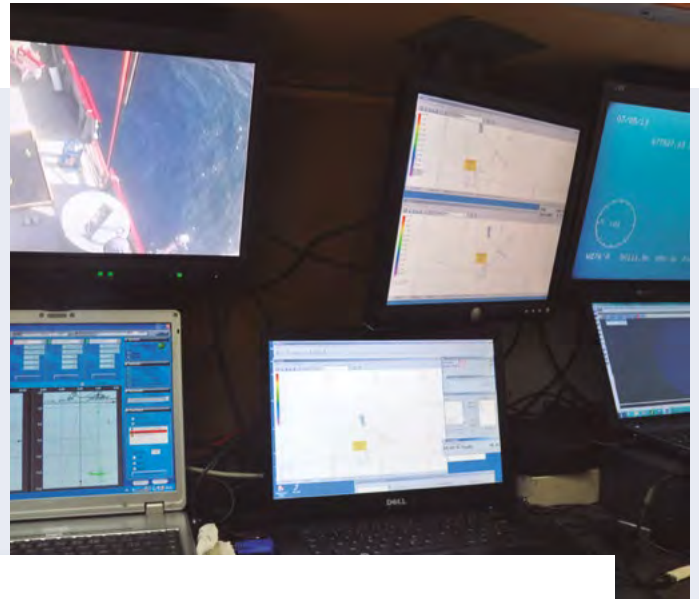
A sufficiently detailed marine route survey is one of the most critical tasks during the planning and preparation of a submarine cable, performed with hydrographic, geophysical and geotechnical equipment and complemented by video inspections to verify the seabed conditions prior to cable installation. Tecnoambiente provides as well the post-lay surveys and inspections to verify the position and condition of the cable after the installation and protection tasks. Tecnoambiente services include:

- ~ Geophysical and geotechnical survey in the selected routes, including landfalls and nearshore areas.
- ~ UXO Survey and target identification with ROV or divers.
- ~ Geotechnical site investigation in landfalls (HDD projects).
- ~ A detailed survey for existing cable crossings.
- ~ Post-lay surveys and inspections.
- ~ BAS and CBRAs.





## CABLE INSPECTIONS - MAINTENANCE



Tecnoambiente provides post-construction surveys and inspection by ROVs or divers including the following services:

- ~ Support in case of cable failures in different scenarios (shallow/deep).
- ~ Asset integrity inspections: divers, ROV and AUV.
- ~ Repair and post-repair EMP.
- ~ Decommissioning support.
- ~ Failure prevention.



## Spain

### Catalonia (Headquarters)

Rda. Can Fatjó, 19 B, Parc Tecnològic del Vallès  
08290 Cerdanyola del Vallès (Barcelona)  
T. +34 93 594 20 36  
F. +34 93 594 21 53  
info@tecnoambiente.com

### Aragon (Laboratory)

C/ Sisallo, 22-24, Nave D-9, Pol. Empresarium  
50720 La Cartuja Zaragoza  
T. +34 976 13 26 33  
F. +34 976 13 26 48  
delegacion.aragon@tecnoambiente.com

### Catalonia (Laboratory)

C/ Indústria, 550 - 552  
08918 Badalona (Barcelona)  
T. +34 93 387 80 80  
F. +34 93 387 80 39  
tecnoambiente@tecnoambiente.com

### Canary Islands

C/ Domingo J. Navarro, 48 bajo  
35002 Las Palmas de Gran Canaria  
T. +34 93 594 20 36  
F. +34 93 387 80 39  
delegacion.canarias@tecnoambiente.com

### Andalusia

C/ Newton, 15 E, Parque empresarial  
11407 Jerez de la Frontera (Cádiz)  
T. +34 956 30 24 86  
F. +34 956 31 01 39  
delegacion.andalucia@tecnoambiente.com

### Galicia

C/ Galileo Galilei, 34, planta 1ª, puerta A  
15008 A Coruña  
T. +34 981 27 47 20  
F. +34 981 27 47 77  
delegacion.galicia@tecnoambiente.com

## Peru

### Lima

Avda. Arequipa, 2450, Oficina 608  
Lince, LIMA  
T.+511 444 1238  
sucursal.peru@tecnoambiente.com

## Colombia

### Bogotá

C/ 90, 12 - 28, Oficina 24  
Chicó, Bogotá D.C.  
T. +571 6386894  
sucursal.colombia@tecnoambiente.com



tecnoambiente.com



company/tecnoambiente---tradebe



@Tecnoambiente\_